

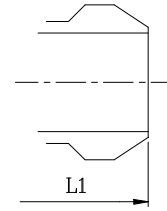
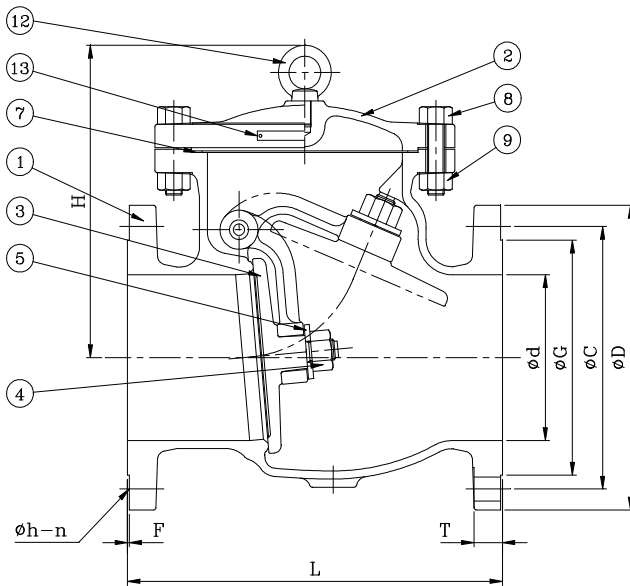
# CAST STAINLESS STEEL CHECK VALVE - ANSI CLASS 300

**DESIGN DESCRIPTION:**

- BOLTED COVER
- SWING TYPE
- FOR HORIZONTAL OR VERTICAL LINES
- INTEGRAL SEAT
- FLANGED ENDS
- BUTTWELDING ENDS

**APPLICABLE STANDARDS:**

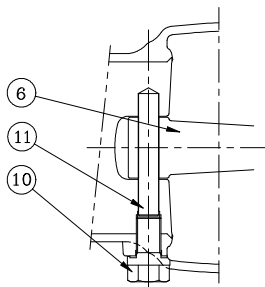
- STEEL VALVES, ANSI B16.34
- FACE TO FACE, ANSI B16.10
- END FLANGES, ANSI B16.5
- BUTTWELDING ENDS, ANSI B16.25
- INSPECTION AND TEST, API 598



Buttwelding Ends

**PARTS AND MATERIAL (ASTM)**

NO.	PARTS NAME	MATERIALS		
		CF8	CF8M	CF3M
1	Body	A351-CF8	A351-CF8M	A351-CF3M
2	Cover	A351-CF8	A351-CF8M	A351-CF3M
3	Disc	A351-CF8	A351-CF8M	A351-CF3M
4	Disc Nut	A194-8	A194-8M	A194-8M
5	Disc Washer	A276-304	A276-316	A276-316L
6	Swing Arm	A351-CF8	A351-CF8M	A351-CF3M
7	Gasket	304 Spiralwound	316 Spiralwound	316L Spiralwound
8	Cover Bolt	A193-B8		
9	Cover Bolt Nut	A194-8		
10	Plug	A276-304	A276-316	A276-316L
11	Hinge Pin	A276-304	A276-316	A276-316L
12	Eye Bolt	A36+Zn Plate		
13	Name Plate	A666-304		



OTHER MATERIALS ARE AVAILABLE UPON REQUEST.

**TEST PRESSURE TO API 598**

			PSIG
SHELL TEST (water)	SEAT TEST (water)	SEAT TEST (air)	
1125 ( 79 kg/cm <sup>2</sup> )	814 ( 57 kg/cm <sup>2</sup> )	80 ( 6 kg/cm <sup>2</sup> )	

**DIMENSION TABLE:**

DN	NPS	Ød	L & L1	H	T	F	ØD	ØC	ØG	Øh	n	WT.(Kg)
15	1/2	12.7	152	71	14.3	1.6	95.3	66.5	35.1	16	4	7
20	3/4	19.0	178	71	15.8	1.6	117.4	82.6	43.0	19	4	8
25	1	25.4	216	110	17.5	1.6	124.0	88.9	50.8	19	4	9
40	1 1/2	38.1	241	160	20.6	1.6	155.5	114.3	73.2	22.3	4	15
50	2	50.8	267	173	22.4	1.6	165.1	127.0	92.0	19.0	8	23
65	2 1/2	63.5	292	180	25.4	1.6	190.5	149.4	104.7	22.3	8	34
80	3	76.2	318	220	28.5	1.6	209.6	168.1	127.0	22.3	8	41
100	4	101.6	356	236	31.8	1.6	254.0	200.2	157.2	22.3	8	68
150	6	152.4	445	310	36.6	1.6	317.5	269.8	215.9	22.3	12	125
200	8	203.2	533	340	41.2	1.6	381.0	330.2	269.8	25.4	12	196
250	10	254.0	622	393	47.8	1.6	444.5	387.4	323.9	28.5	16	292
300	12	304.8	711	428	50.8	1.6	520.7	450.9	381.0	31.8	16	450
350	14	336.6	838	470	53.9	1.6	584.2	514.4	412.8	31.8	20	688
400	16	387.4	864	533	57.2	1.6	647.7	571.5	469.9	35.1	20	860