

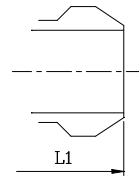
CAST STEEL GLOBE VALVES - ANSI CLASS 300

DESIGN DESCRIPTION:

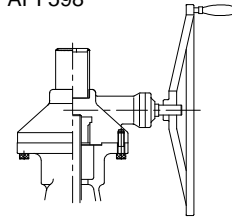
- OUTSIDE SCREW AND YOKE
- BOLTED BONNET
- RISING STEM AND HANDWHEEL (IMPACT HAMMER HANDWHEEL FOR 8" & OVER.)
- YOKE INTEGRAL WITH BONNET
- LOOSE DISC
- RENEWABLE SEAT RINGS
- AVAILABLE WITH GEAR OPERATOR
- FLANGED ENDS
- BUTTWELDING ENDS

APPLICABLE STANDARDS:

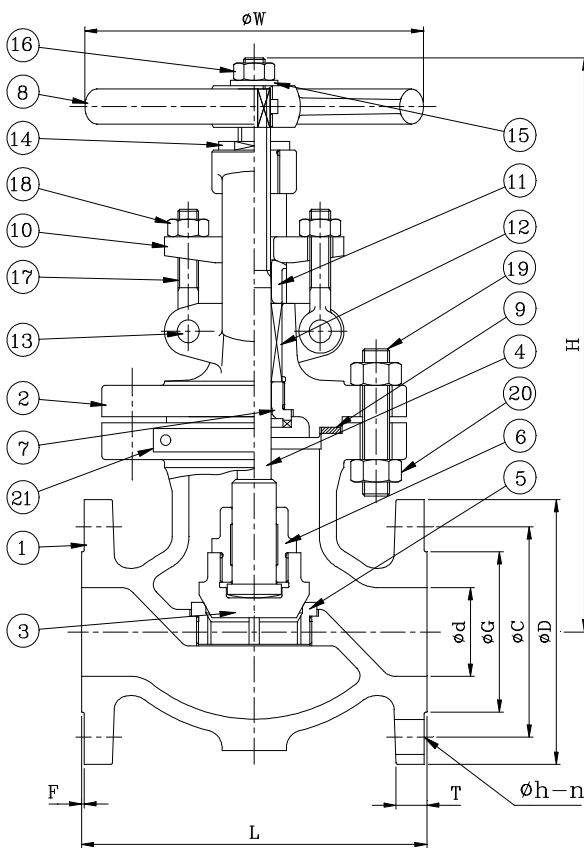
- STEEL VALVES, ANSI B16.34
- FACE TO FACE, ANSI B16.10
- END FLANGES, ANSI B16.5
- BUTTWELDING ENDS, ANSI B16.25
- INSPECTION AND TEST, API 598



Buttwelding Ends



Available With Gear Operator



PARTS AND MATERIAL (ASTM)

NO.	PARTS NAME	MATERIALS		
		WCB	WC6	LCB
1	Body	A216-WCB	A217-WC6	A352-LCB
2	Bonnet	A216-WCB	A217-WC6	A352-LCB
3	Disc	A216-WCB+H/F 410	A217-WC6+H/F 410	A352-LCB+H/F 410
4	Stem	A276-410		
5	Seat	A105+H/F STL#6	A182-F11+H/FSTL#6	A350-LF2+H/F STL#6
6	Disc Nut	A276-410		
7	Back Seat	A276-410		
8	Hand Wheel	A47 / A536		
9	Gasket	304 Spiralwound w/ Grafoil Filler		
10	Gland Flange	A216-WCB		
11	Gland	A276-410		
12	Gland Packing	Graphite		
13	Eye Bolt Pin	A276-410		
14	Stem Nut	A439-D2		
15	Washer	A36+Zn Plate		
16	Wheel Nut	A194-2H		
17	Eye Bolt	A307 B		
18	Eye Bolt Nut	A194-2H		
19	Bonnet Bolt	A193-B7	A193-B7	A193-B7M
20	Bonnet Bolt Nut	A194-2H	A194-2H	A194-2HM
21	Name Plate	A666-304		

OTHER MATERIALS ARE AVAILABEL UPON REQUEST.

TEST PRESSURE TO API 598

PSIG

SHELL TEST (water)	SEAT TEST (water)	SEAT TEST (air)
1125 (79 kg/cm ²)	814 (57 kg/cm ²)	80 (6 kg/cm ²)

DIMENSION TABLE:

DN	NPS	Ød	L & L1	H	H(OOPEN)	ØW	T	F	ØD	ØC	ØG	Øh	n	WT.(Kg)
50	2	50.8	267	405	422	200	22.4	1.6	165.1	127.0	92.0	19.0	8	29
65	2 1/2	63.5	292	445	468	250	25.4	1.6	190.5	149.4	104.7	22.3	8	43
80	3	76.2	318	490	520	300	28.5	1.6	209.6	168.1	127.0	22.3	8	55
100	4	101.6	356	567	607	300	31.8	1.6	254.0	200.2	157.2	22.3	8	86
150	6	152.4	445	732	784	400	36.6	1.6	317.5	269.8	215.9	22.3	12	176
200	8	203.2	559	797	868	500	41.2	1.6	381.0	330.2	269.8	25.4	12	280
250	10	254.0	622	973	1042	600	47.8	1.6	444.5	387.4	323.9	28.5	16	420
300	12	304.8	711	1030	1140	700	50.8	1.6	520.7	450.9	381.0	31.8	16	645
350	14	366.6	838	1093	1154	800	53.9	1.6	584.2	514.4	412.8	31.8	20	880
400	16	387.4	864	1145	1206	900	57.2	1.6	647.7	571.5	469.9	35.1	20	1280